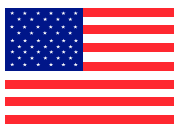


MATJACK-SIMPLY THE BEST!



Matjack High Pressure Air Lifting Bags



Made in the USA

CE Certified

INDIANAPOLIS INDUSTRIAL PRODUCTS, INC.

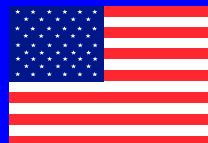
2320 DUKE STREET

INDIANAPOLIS, INDIANA 46205

TOLL FREE US & CANADA (800) 827-3755

(317) 359-3078 FAX: (317) 359-3079

EMAIL: matjack@sprynet.com



ISO 9001-2008 QMS CERTIFIED



MatJack Airbags - Reliable, Safe and Easy-to-Use!



Put MatJacks under a load and inflate! Our hand-held controls have two buttons: inflate and deflate. It's just that easy. No more hand jacking or complex hydraulic valve systems.

MatJacks will work anywhere you have one inch clearance and perform in the most adverse conditions. Use MatJacks in a field, throw on sharp gravel, muddy banks, wet grass, or other sloppy conditions. Use on the ground for conventional jacking, or turn sideways to scoot heavy machinery or objects from a tight corner. MatJacks work where conventional jacks don't.

Covered with five layers of neoprene rubber with a raised, conical, interlocking surface, **MatJacks are made to grip the load.** MatJacks provide the best traction possible. Each MatJack Kit comes with 20' (6.2m.) of high pressure hose and hand controls so you're safely out from under the load pushing buttons, not underneath the load you are trying to lift.

MatJack Air Lifting Bags
have been helping a
variety of industries
worldwide
in countless applications.



MatJacks For The Construction Industry

MatJacks work perfectly in construction sites. Even in the muddiest, sloppiest, iciest conditions, MatJacks make lifting easy. Move machinery or pipe, pick up bridge sections, or raise and level buildings and heavy objects quickly and easily. Perform undercarriage work or change tracking and tires quickly on the largest off-road equipment. Lifting heavy machinery for repairs is made simple with MatJack.

The MatJack Advantage

When you use MatJack Air Lifting Bags you get the advantage of one of the simplest and most versatile tools available today for lifting and moving heavy objects. Used worldwide throughout a variety of industries, MatJacks lift heavy machinery at construction sites, set and adjust manufactured buildings and assist house movers. MatJacks are used to up-right overturned tractor trailers and are an integral part of the equipment of thousands of fire and rescue departments and USAR teams. MatJacks are used in every branch of the military. MatJacks are totally manufactured in the USA and have been popular worldwide since 1981.

When you need a tough, versatile air lifting bag get the MatJack Advantage!
Call our toll free number; (800-827-3755) for the name and phone number of the nearest MATJACK dealer in your area.

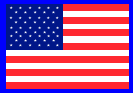


MATJACK to the Rescue and Recovery!



MatJacks for the Fire & Rescue Industry

When seconds count and lives are on the line, MatJacks can help free victims trapped in wrecked vehicles or collapsed buildings. Needing only an inch of clearance, MatJacks can slide into areas no ordinary jacking system can go, helping to extricate victims quickly and easily. If a human can get there, so can a MatJack.



MatJacks are American-made and built with the high quality and rugged construction you expect when you get the best!

MatJacks for Recovery—

Need to lift a trailer to get room for cushions or straps? MatJack can get you the lift you need. MatJacks make load shift work easier than any other tool. MatJacks work right off your service air on your wrecker and store easily, with lots of sizes to choose from don't wait until your in the ditch to decide you need one!



**MatJacks Have a
Five-Year Warranty
The Best in the Industry!**



MATJACK High Pressure Air Lifting Bags Rise Above the competition Every Time!



MatJacks for the Manufactured Home & House Moving Industry

Matjacks are uniquely designed to lift, roll and level singles, doublewides, triplewides, modulars and other forms of manufactured housing. Using long hoses and handheld controls, you get safely out from underneath the home without the bumps and bruises that often come when operating a bottle jack. If your driver can put the sections within six inches of each other, a couple of Matjacks and a come-a-long become a setting system for doublewides. Whether lifting a house on the side of a hill or a portable school/office off asphalt, Matjacks are a unique air lifting bag designed to lift, shift and level with a minimum of fuss and only one inch of clearance.



MatJacks for the Mining, Military & Railroad Industries

Use MatJack to quickly and safely rerail mining locomotives, rail cars, or any rail vehicle. MatJacks are useful in quarrying limestone, marble, rock— you name it: and they can be used in rescue operations in mines and quarries to move and lift rubble from trapped victims. MatJacks are used in cargo container loading and shipping as well as other transport activities. Even in the worst field conditions. MatJacks are indispensable for military field service of tracked and lugged off-road equipment such as tanks, APC's, airport vehicles, and self-propelled artillery.

MatJacks have been on the front line since 1981.



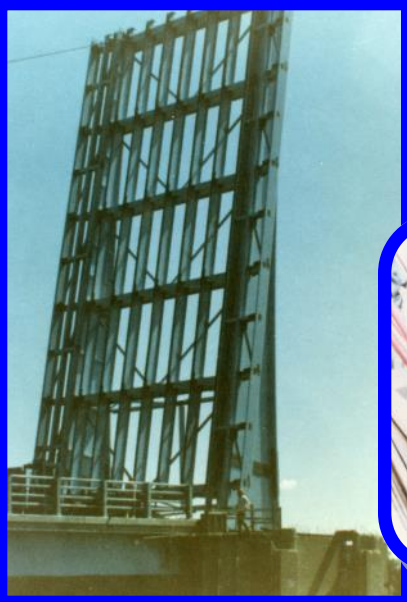
For more information, call (800) 827-3755



STRENGTH

Visit our website
MAT JACK
www.matjack.com

& DURABILITY



Use MatJacks under the most adverse conditions to re-locate position and align heavy machinery and odd-shaped loads. MatJacks air lifting bags are used anywhere there's a heavy object to lift or move.

MATJACK AIR LIFTING BAGS SIMPLY THE BEST!

- MatJack's unique construction of four full layers of Aramid Fiber or three full layers of woven steel, provide for a lifting bag unequalled in strength and durability.
- All MatJack air lifting bags are marked with a distinct white numbered, "bulls eye" for ease of centering under the load, and have a conical, interlocking surface to limit slippage and aid in stacking.
- All MatJacks have either carry handles or tabs molded right on for lifting or attaching to fixtures.
- The MatJack "state-of-the-art" deadman controller allows for independent or simultaneous operation of one or more airbags.
- Supply hoses are color coded to help eliminate confusion during simultaneous operation of more than one air bag.
- Available in a variety of sizes and ranging in lifting capacity from 1.5 tons to 86 tons, the MatJack air lifting bag system is efficient and economical, safe and reliable, making them simply the best.



Matjacks are American-made and built with the high quality and rugged construction you expect when you get the best!



**MATJACKS come in variety of sizes
for all your lifting needs!**

MATJACK HIGH PRESSURE AIR LIFTING BAG SPECIFICATIONS

PART #	MODEL	MATERIAL TYPE	DIMENSIONS IN CM	CAPACITY US TONS METRIC TON	LIFTING HEIGHT IN CM	WEIGHT LBS KG	MAX WORKING PRESSURE	SHAPE	HANDLES TABS WITH EYELETS	VOLUME -AIR CU. FT./ LTR
101K	1.5 TON	ARAMID	6 x 6 x .75 in. 15.24 x 15.24 x 1.9 cm.	1.5 1.3	2.5 6	2 .9	120 psi 8 bar	SQUARE	2 TABS	.2 6.3
103K	3.3 TON	ARAMID	6 x 12 x .75 in. 15.24 x 30.48 x 1.9 cm.	3.3 2.9	3 7	3 1.3	120 psi 8 bar	RECTANGLE	4 TABS	.44 12.66
106S	6 TON	STEEL	10 x 10 x 1 in. 25.4 x 25.4 x 2.54 cm	6 5	4.5 11	6 2.7	120 psi 8 bar	SQUARE	4 TABS	.68 19.3
106K	6 TON	ARAMID	10 x 10 x 1 in. 25.4 x 25.4 x 2.54 cm	6 5	4.5 11	4 1.8	120 psi 8 bar	SQUARE	4 TABS	.68 19.3
113S	13 TON	STEEL	15 x 15 x 1 in. 38.1 x 38.1 x 2.54 cm.	13 11	7.5 19	15 6.8	120 psi 8 bar	SQUARE	4 TABS	2.7 76.4
113K	13 TON	ARAMID	15 x 15 x 1 in. 38.1 x 38.1 x 2.54 cm	13 11	7.5 19	11 4.9	120 psi 8 bar	SQUARE	4 TABS	2.7 76.4
115S	15 TON	STEEL	15 x 21 x 1 in. 38.1 x 53.34 x 2.54 cm.	14.8 13.5	7.5 19	19 9	120 psi 8 bar	RECTANGLE	2 TABS 1 HANDLE	3.48 98.6
115K	15 TON	ARAMID	15 x 21 x 1 in. 38.1 x 53.34 x 2.54 cm.	14.8 13.5	7.5 19	15 7	120 psi 8 bar	RECTANGLE	2 TABS 1 HANDLE	3.48 98.6
122S	22 TON	STEEL	20 x 20 x 1 in. 50.8 x 50.8 x 2.54 cm.	22 19	9.5 24	28 12.7	120 psi 8 bar	SQUARE	1 HANDLE	6.67 189
122K	22 TON	ARAMID	20 x 20 x 1 in. 50.8x 50.8 x 2.54 cm.	22 19	9.5 24	22 9.9	120 psi 8 bar	SQUARE	1HANDLE	6.67 189
132S	32 TON	STEEL	21 x 25 x 1 in. 53.34 x 63.5 x 2.54c m.	32 29	12 30	35 15.8	120 psi 8 bar	RECTANGLE	1 HANDLE	11.58 328
132K	32 TON	ARAMID	21 x 25 x 1 in. 53.34 x 63.5 x 2.54 cm.	32 29	12 30	28 12.7	120 psi 8 bar	RECTANGLE	1 HANDLE	11.58 328
137S	37 TON	STEEL	42 x16 x 1 in. 106.68 x 40.64x2.54 cm.	37 34	9 22	43 19.5	120 psi 8 bar	RECTANGLE	7 TABS 2 HANDLE	13.3 375.8
137K	37 TON	ARAMID	42 x 16 x 1 in. 106.68 x 40.64 x 2.54 cm.	37 34	9 22	33 14.9	120 psi 8 bar	RECTANGLE	7 TABS 2 HANDLE	13.3 375.8
150S	50 TON	STEEL	29 x 29 x 1 in. 73.66 x 73.66 x 2.54 cm.	50 45	15 38	63 28.5	120 psi 8 bar	SQUARE	2 HANDLE	19.78 560
150K	50 TON	ARAMID	29 x 29 x 1 in. 73.66 x 73.66 x 2.54 cm.	50 45	15 38	45 20.4	120 psi 8 bar	SQUARE	2 HANDLE	19.78 560
170S	70 TON	STEEL	34 x 34 x 1 in. 86.36 x 86.36 x 2.54 cm.	70 63	18 45	81 36.7	120 psi 8 bar	SQUARE	2 HANDLE	37.5 1062
170K	70 TON	ARAMID	34 x 34 x 1 in. 86.36 x 86.36 x 2.54 cm.	70 63	18 45	60 27.2	120 psi 8 bar	SQUARE	2 HANDLE	37.5 1062
186S	86 TON	STEEL	42 x 42 x 1 in. 106.68 x 106.68 x 2.54cm	86 78	24 60	118 53.6	120 psi 8 bar	SQUARE	4 HANDLE	57 1616

 **MAX WORKING PRESSURE IS 120 PSI OR 8 BAR**

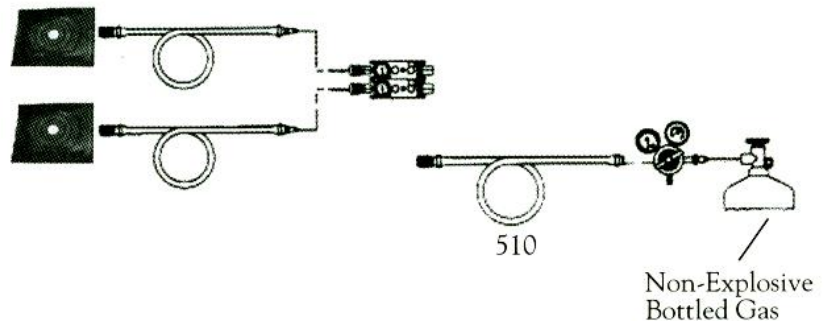
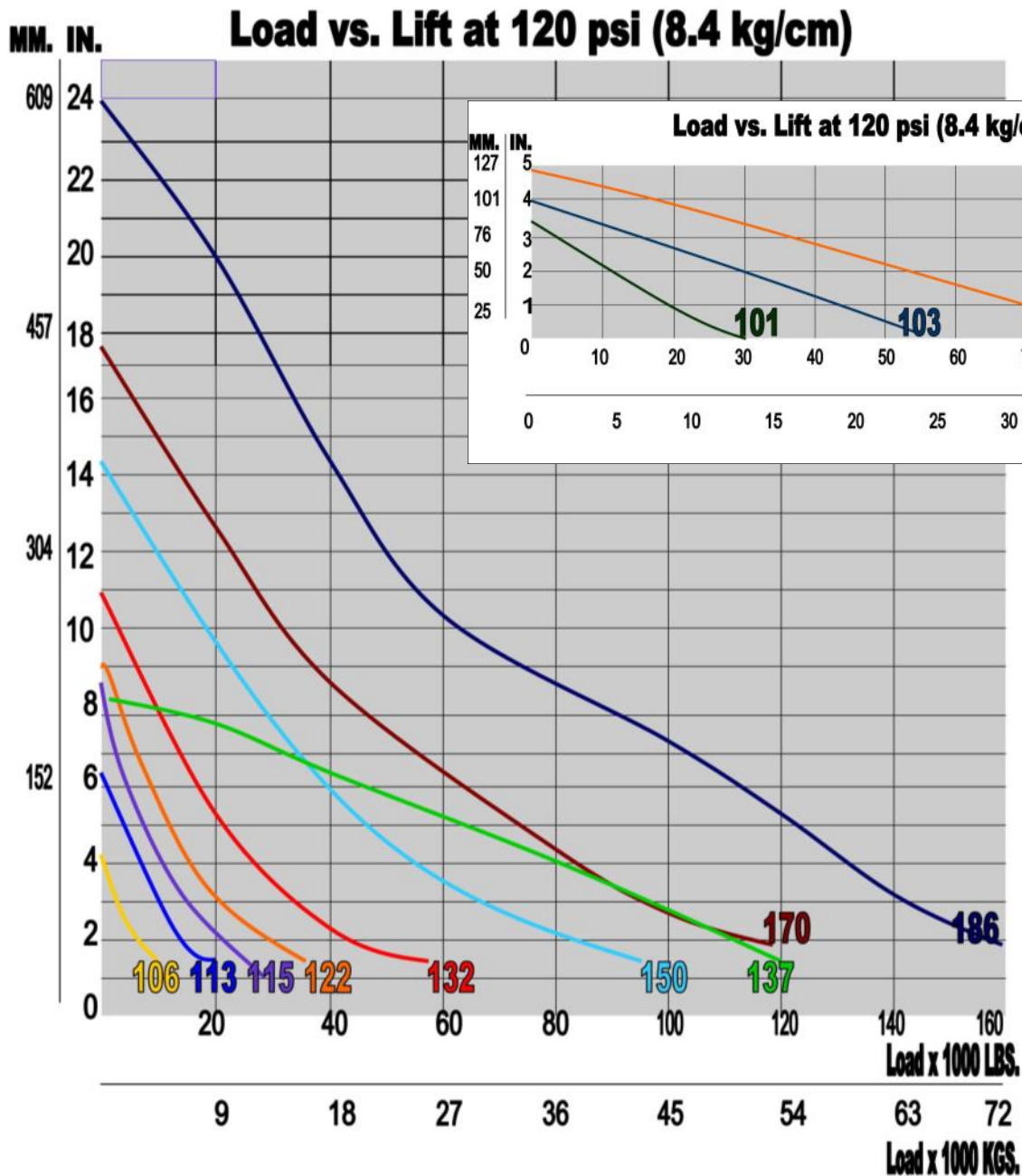
Note: Dimension do not include eyelets or handles.

Lifting capacity and height will vary according to air pressure and bag contact area.

All Matjack High Pressure Air Lifting Bags come with a **(molded non-slip interlocking surface)** **(5 Year Unconditional Warranty)** **(air shut off valve)** **(Orange or Blue numbered bullseye)** **(yellow warning label)** and are **(Made in the USA)** and **(CE Certified)**



MATJACKS come in variety of sizes
for all your lifting needs!





MATJACKS come in variety of sizes for all your lifting needs!

MATJACK HIGH PRESSURE AIR BAGS



INDIANAPOLIS INDUSTRIAL PRODUCTS, INC.

Note: All Matjack High Pressure Air Bags come with (653) air cock shut off



1.5 Ton MatJack (available only in Aramid)
Mat jack Dimensions: 6x6x.75 in. / 15.24x15.24x1.9 cm
Inflation Height: 2.5" / 6 cm.
Max. Working Pressure 120 p.s.i. / 8 bar
Weight 2 LBS. / .9 kg.

Part # 101K 1.5 Ton Matjack High Pressure Air Bag
Part # 101BK 1.5 ton Matjack High Pressure Air Bag KIT



3.3 Ton Matjack (available only in Aramid)
Matjack Dimensions: 6x12x.75 in. / 15.24x30.48x1.9 cm
Inflation Height: 3" / 7 cm.
Max. Working Pressure 120 p.s.i. / 8 bar
Weight 3 LBS. / 1.3 kg.

Part # 103K 3.3 Ton Matjack High Pressure Air Bag
Part # 103BK 3.3 ton Matjack Single Bag Kit



6 Ton Steel or Aramid MatJack
Matjack Dimensions : 10x10x1 in. / 25.4x25.4x2.54 cm.
Max. Working Pressure 120 p.s.i. / 8 bar
Inflation Height: 4.5" / 11 cm.
Steel Weight 6 LBS / 2.7 kg. - Aramid Weight 4 LBS. / 1.8 kg.

Part # 106S 6 Ton Steel Matjack High Pressure Air Bag
Part # 106K 6 ton Aramid Matjack High Pressure Air Bag
Part # 106BS 6 Ton Steel Matjack Basic Kit
Part # 106BK 6 ton Aramid Matjack Basic Kit



13 Ton Steel or Aramid MatJack
Matjack Dimensions: 15"x15"x1 in. / 38.1x38.1x2.54 cm.
Max. Working Pressure 120 p.s.i. / 8 bar
Inflation Height: 7.5" / 19 cm.
Steel Weight 15 LBS. / 6.8 kg. - Aramid Weight 11 LBS. / 4.9 kg.

Part # 113S 13 Ton Steel Matjack High Pressure Air Bag
Part # 113K 13 ton Aramid Matjack High Pressure Air Bag
Part # 113BS 13 Ton Steel Matjack Basic Kit
Part # 113BK 13 ton Aramid Matjack Basic Kit



15 Ton Steel or Aramid MatJack
Matjack Dimensions: 15"x21"x1 in. / 38.1x53.34x2.54 cm.
Max. Working Pressure 120 p.s.i. / 8 bar
Inflation Height: 7.5" / 19 cm.
Steel Weight 19 LBS. / 9 kg. - Aramid Weight 15 LBS. / 7 kg.

Part # 115S 15 Ton Steel Matjack High Pressure Air Bag
Part # 115K 15 ton Aramid Matjack High Pressure Air Bag
Part # 115BS 15 Ton Steel Matjack Basic Kit
Part # 115BK 15 ton Aramid Matjack Basic Kit





MATJACKS come in variety of sizes for all your lifting needs!

37 Ton Steel or Aramid Matjack

Matjack Dimensions 42x16x1 in. / 106.68x40.64x2.54 cm.
Max Working Pressure 120 p.s.i. / 8 bar
Inflation Height: 9" / 22 cm
Steel Weight 43 lbs. / 19.5 kg - Aramid Weight 33 lbs. / 14.9 kg.



- Part # 137S 37 Ton Steel Matjack High Pressure Air Bag
Part # 137K 37 ton Aramid Matjack High Pressure Air Bag
Part # 137BS 37 Ton Steel Matjack Basic Kit
Part # 137BK 37 ton Aramid Matjack Basic Kit



22 Ton Steel or Aramid MatJack

Matjack Dimensions 20x20x1 in. / 50.8x50.8x2.54 cm.
Max Working Pressure 120 p.s.i. / 8 bar
Inflation Height: 9.5" / 24 cm
Steel Weight 28 lbs. / 12.7 kg - Aramid Weight 22 lbs. / 9.9 kg.



- Part # 122S 22 Ton Steel Matjack High Pressure Air Bag
Part # 122K 22 ton Aramid Matjack High Pressure Air Bag
Part # 122BS 22 Ton Steel Matjack Basic Kit
Part # 122BK 22 ton Aramid Matjack Basic Kit



32 Ton Steel or Aramid MatJack

Matjack Dimensions 21x25x1 in. / 53.34x63.5x2.54 cm.
Max Working Pressure 120 p.s.i. / 8 bar
Inflation Height: 12" / 30 cm
Steel Weight 35 lbs. / 15.8 kg - Aramid Weight 28 lbs. / 12.7 kg.



- Part # 132S 32 Ton Steel Matjack High Pressure Air Bag
Part # 132K 32 ton Aramid Matjack High Pressure Air Bag
Part # 132BS 32 Ton Steel Matjack Basic Kit
Part # 132BK 32 ton Aramid Matjack Basic Kit



50 Ton Steel Or Aramid MatJack

Matjack Dimensions 29x29x1 in. / 73.66x73.66x2.54 cm.
Max Working Pressure 120 p.s.i. / 8 bar
Inflation Height: 15" / 38 cm
Steel Weight 63 lbs. / 28.5 kg - Aramid Weight 45 lbs. / 20.4 kg.



- Part # 150S 50 Ton Steel Matjack High Pressure Air Bag
Part # 150K 50 ton Aramid Matjack High Pressure Air Bag
Part # 150BS 50 Ton Steel Matjack Basic Kit
Part # 150BK 50 ton Aramid Matjack Basic Kit



70 Ton Steel or Aramid Matjack

Matjack Dimensions 34x34x1 in. / 86.36x86.36x2.54 cm.
Max Working Pressure 120 p.s.i. / 8 bar
Inflation Height: 18" / 45 cm
Steel Weight 81 lbs. / 36.7 kg - Aramid Weight 60 lbs. / 27.2 kg.

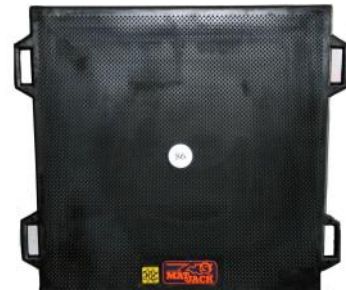


- Part # 170S 70 Ton Steel Matjack High Pressure Air Bag
Part # 170K 70 ton Aramid Matjack High Pressure Air Bag
Part # 170BS 70 Ton Steel Matjack Basic Kit
Part # 170BK 70 ton Aramid Matjack Basic Kit



86 Ton Steel or Aramid Matjack

Matjack Dimensions 42 x 42 x 1 in. / 106.68 X 106.68 X 2.54 cm.
Max Working Pressure: 120 p.s.i. / 8 bar
Inflation Height: 24" / 60 cm
Steel Weight: 118 lbs. / 53.6 kg.



- Part # 186S 86 Ton Steel Matjack High Pressure Air Bag
Part # 186BS 86 Ton Steel Matjack Basic Kit





MATJACKS come in variety of sizes for all your lifting needs!

MATJACK HIGH PRESSURE CONTROLS AND ACCESSORIES



High Pressure Single Unit Control
Dimensions : 3" x 7" x 3" /
Weight: 2 lb

Push button deadman control w/ relief used to control pressurizing and deflation of high pressure Matjack air bags.

Part # 201



High Pressure 2 Unit Control
Dimensions : 6" x 7" x 3"
Weight: 5 lb

Dual push button deadman control w/ relief used to control pressurizing and deflation of Matjack high pressure bags

Part #202



High Pressure 4 Unit Control
Dimensions : 15" x 10" x 3"
Weight: 12 lb

Four unit push button deadman control w/ relief used to control pressurizing and deflation of Matjack high pressure bags

Part # 204



High Pressure Lever Control
Dimensions : 5" x 7" x 7"
Weight: 4 lb

Pistol grip style deadman control w/ lock open feature for continuous air flow, built in relief valve w/ aircock for deflation, lock coupling style connectors w/ check plug to allow for multiple control connection for use w/ single air source

Part # 201LC



Double Cylinder Foot Pump

Part # 700
Part # 700SC



Air Cock Shut-Off Valve
Dimensions: 3" x 2" x 0.5" / 7.6 x 5 x 1.2cm
Weight: 1 lbs

1/4 turn air cock shut-off valve for shutting off air source to the

Part # 653

Part # 653SC Air Cock Shut-Off Valve Assembly w Safety Coupler



In-line Relief Valve
Dimensions: 6" x 2" x 1" / 15.2 x 5 x 2.54cm
Weight: 2 lbs

In-line relief valve for use with high pressure air bags to avoid over pressurization. When closed an airline from the control is removed from the airbag.

Part # 612

Part # 612SC



2 Inch 0-160 psi / 8 bar High Pressure Gauge
Dimensions: 2" x 2" x 2" / 5 x 5 x 5cm
Weight: 1 lbs.

Part # 602H



MATJACKS come in variety of sizes for all your lifting needs!

MATJACK HIGH PRESSURE HOSES



3/8" High Pressure Supply Hoses

Colors Available: Red, Black, Yellow, Gray, Blue, Green

Standard size is 20' long

Custom sizes available

Part # 515	20' High pressure hose / 6 meters
Part # 530	30' High pressure hose / 9 meters
Part # 532	32' High pressure hose / 9.7 meters
Part # 535	35' High pressure hose / 10.6 meters
Part # 550	50' High pressure hose / 15 meters



3/8" High Pressure Supply Hoses with Safety Couplers

Colors Available: Red, Black, Yellow, Gray, Blue, Green

Standard size is 20' long

Custom sizes available

Part # 515SC	20' High pressure hose w/ Safety Couplers
Part # 530SC	30' High pressure hose w/ Safety Couplers
Part # 532SC	32' High pressure hose w/ Safety Couplers
Part # 535SC	35' High pressure hose w/ Safety Couplers
Part # 550SC	50' High pressure hose w/ Safety Couplers



3/8" High Pressure Safety Relief Hose

Colors Available: Red, Black, Yellow, Gray, Blue, Green

Standard size is 20' long

Part # 515SR	20' High pressure safety relief hose
Part # 530SR	30' High pressure safety relief hose
Part # 532SR	32' High pressure safety relief hose
Part # 535SR	35' High pressure safety relief hose
Part # 550SR	50' High pressure safety relief hose



3/8" High Pressure Safety Relief Hose with safety coupler

Colors Available: Red, Black, Yellow, Gray, Blue, Green

Standard size is 20' long

Custom sizes available

Part # 515SRSC	20' High pressure safety relief hose with safety couplers
Part # 530SRSC	30' High pressure safety relief hose with safety couplers
Part # 532SRSC	32' High pressure safety relief hose with safety couplers
Part # 535SRSC	35' High pressure safety relief hose with safety couplers
Part # 550SRSC	50' High pressure safety relief hose with safety couplers



Y-Hose and Fittings

Dimensions: 6'x 4' / 1.8m x 1.2m

Weight: 3 lbs.

Y-Hose to connect a single air source to more than one control

Part # 505

Part # 505SC Y-Hose w Safety Couplers



10 Foot Regulator Hose

Dimensions: 3/8" x 10' / 3 meter

Weight: 3 lbs.

10 FOOT HIGH PRESSURE SUPPLY LINE-10' Regulator Hose
to be used with 4500 or 2216 regulator.

Part # 510

Part # 510SC 10 Foot Regulator Hose 2 Safety Couplers-Green



MATJACKS come in variety of sizes for all your lifting needs!

MATJACK CANVAS AND CARRY CASES AND ACCESSORY



1.5t, 3.3t or 6 ton Canvas Storage Bag
Dimensions : 13"x 13" / 33.02 x 33.02 cm
Weight: 2 lb

Canvas storage bag for 1.5,
3.3, or 6 ton Matjack air bag

Part # 306



Pelican control / regulator case—Yellow
Exterior dimensions: 16" length x 13" width x
6.8" deep
/ 40.64cm x 33.02cm x 17.27cm

Part # 603



EXAMPLE
ITEMS SOLD SEPERATELY



13 ton Canvas Storage Bag
Dimensions : 18"x 18" / 45.72 x 45.72 cm
Weight: 3 lb

Canvas storage bag for 13 ton
Matjack air bag.

Part # 310



Master Pelican case—Orange
Exterior dimensions: 20.6" length x 16.8"
width x 8" deep
/ 52.32cm x 42.67cm x 20.32cm

Part # 605



EXAMPLE
ITEMS SOLD SEPERATELY



22t and 32 ton Canvas Storage Bag
Dimensions : 27"x 24" / 68.58 x 60.96 cm
Weight: 3 lb

Canvas storage bag for 22 or 32 ton
Matjack air bag

Part # 320



Military Pelican case—Black or Olive
Drab
Exterior dimensions: 24.25" length x
19.4" width x 8.6" deep
/ 61.59cm x 49.27cm x 21.84cm

Part # 606B / 6060D
Specify Color



EXAMPLE
ITEMS SOLD SEPERATELY



Canvas Accessory Bag
Dimensions : 18"x 18" / 45.72 x 45.72 cm
Weight: 3 lb

Canvas accessory bag included in 50,
70 or 86 ton basic kits

Part # 310A



Universal connector kit Pelican case—
Silver
Exterior dimensions: 13" length x 12"
width x 6" deep
/ 33.02cm x 30.48cm x 15.24cm

Part # 607



EXAMPLE
ITEMS SOLD SEPERATELY



25 Foot Ratchet Strap (Blue Or Yellow)
Dimensions: 9" x 3" / 22.8 x 7.6cm
Weight: 4 lbs.

Part # 625B (Blue)
Part # 625Y (Yellow)
Part # 625PS



MATJACKS come in variety of sizes
for all your lifting needs!

MATJACK REGULATORS AND FITTINGS



Manifold for 2216 Regulator (Brass)

Dimensions: 10" x 3" x 3"

Weight: 4 lbs.

2216 Dual bottle manifold for tying two 2216 bottles together for use with a common regulator.

Order #722 (2216 Reg.)



Manifold for 4500 (Dual Bottle)

Dimensions: 12" x 4" x 2"

Weight: 2 lbs.

Order# 746 (4500 Reg.)



Piston Type Regulator

Dimensions: 3" x 4" x 2"

Weight: 2 lbs.

Two stage piston type regulator for SCBA air bottles up to 5000psi

Part # 765

Part # 765SC Regulator for Air Bottle (4500) w Safety Coupler

Part # 765DIN Regulator for Air Bottle (4500) w DIN Fitting

Part # 765SCDIN Regulator for Air Bottle (4500) w DIN Fitting and Safety Coupler



Regulator for Air Bottle (2216)

Dimensions: 8" x 7" x 6"

Weight: 4 lbs.

2216 Two-stage, regulator for SCBA air bottles up to 3000 psi.

Part # 722

Part # 722SC Regulator for Air Bottle (2216) w Safety Coupler



Regulator for Air Bottle (4500)

Dimensions: 6" x 7" x 4"

Weight: 3 lbs.

4500 two stage diaphragm regulator for SCBA air bottles up to 5000 psi

Part # 745

Part # 745SC Regulator for Air Bottle (4500) w Safety Coupler

Part # 745DIN Regulator for Air Bottle (4500) w DIN Fitting

Part # 745SCDIN Regulator for Air Bottle (4500) w DIN Fitting and Safety Coupler



MATJACKS come in variety of sizes for all your lifting needs!

MATJACK CONTROL PACKAGES AND UNIVERSAL CONNECTOR KIT

This Master Control Package #4 consist of:



Item Part #	Qty	Description: Master Control package
202	1	Dual deadman control
745	1	0-6000 Pressure regulator
510	1	10' regulator hose
515BLK	1	20' H. P. air hose Black
515BL	1	20' H. P. air hose Blue
515Y	1	20' H. P. air hose Yellow
515R	1	20' H. P. air hose Red
515G	1	20' H. P. air hose Green
612	4	In line relief valves
613	1	Glad hand adapter
614	2	Matjack nipple with 1/4" NPT male
615	2	Matjack nipple with 1/4" NPT female
616	1	Matjack nipple with tire chuck adapter
617	1	Shut off adapter with industrial nipples
618	2	Y adapter female to male
619	1	Y adapter female to female
620	1	Shut off adapter nipple with
621	1	industrial twist lock coupling
605	1	Orange Pelican carrying case

Part # MJMCP 4P

This Master Control Package #2 consist of:



Item Part #	Qty	Description: Control Package 2
202	1	Dual deadman control
722	1	0-4000 pressure regulator
510	1	10' regulator hose
515R	1	20' H. P. air hose Red
515Y	1	20' H. P. air hose Yellow

Part # MJMCP 2

This Master Control Package #3 consist of:



Item Part#	Qty	Description: Control Package 3
202	1	Dual deadman control
745	1	0-6000 pressure regulator
510	1	10' regulator hose
515R	1	20' H. P. air hose Red
515Y	1	20' H. P. air hose Yellow

Part # MJMCP 3

Universal Connector Kit

This kit consist of:

Universal connector kit to be used to adapt multipule air sources to inflate high pressure air bag.



Part # 601UK



STRENGTH & DURABILITY

ALL MATJACKS COME WITH THE BEST WARRANTY IN THE INDUSTRY

INDIANAPOLIS INDUSTRIAL PRODUCTS, INC STATEMENT OF WARRANTY FOR HIGH PRESSURE AIR LIFTING BAG PRODUCTS

Seller warrants to the original purchaser that its product shall be free of defect in material and workmanship for a period not exceeding 5 years after delivery: Under normal use and service for which it is intended if, but only, if it has been properly operated pursuant to instructions supplied by seller. Seller's obligation under the warranty is limited to replacing free of charge any defective products manufactured by seller which are returned to seller's factory within 45 days after the defect is discovered. 5 years after delivery buyer shall receive a credit against the cost of replacing the product limited to \$100.00

THE WARRANTY PROVIDED IN THIS ARTICLE AND THE OBLIGATIONS AND LIABILITIES OF SELLER THEREUNDER ARE EXCLUSIVE AND IN LIEU OF AND BUYER HEREBY WAIVES ALL OTHER REMEDIES, WARRANTIES, GUARANTIES OR LIABILITIES, EXPRESS OR IMPLIED, ARISING BY LAW OR OTHERWISE (INCLUDING WITHOUT LIMITATION ANY OBLIGATIONS OF THE SELLER WITH RESPECT TO FITNESS, MERCHANTABILITY AND CONSEQUESNTIAL DAMAGES) OR WHETHER OR NOT OCCASIONED BY SELLER'S NEGLIGENCE. THIS WARRANTY SHALL NOT BE EXTENDED, ALTERED OR VARIED BY A WRITTEN INSTRUMENT SIGNED BY SELLER AND BUYER.

Made in the USA



Other Great MatJack Products

When failure isn't an option!



**Besides our MatJack High Pressure Air Bags
We also carry a variety of other great products:**



**Jumbo Recovery Systems
Low Pressure Air Cushions
Medium Pressure Air Cushions
Landing Bags
Underwater Lift Bag, etc...**



Please visit our website for more information



**MATJACK / INDIANAPOLIS INDUSTRIAL PRODUCTS, INC.
2320 DUKE STREET**

INDIANAPOLIS, INDIANA 46205

**Toll Free US and Canada (800) 827-3755 PHONE: (317) 359-3078 FAX: (317) 359-3079
EMAIL: matjack@sprynet.com**